

NEW MEXICO  
DUAL CREDIT PROGRAM FOR  
ACADEMIC YEAR 2012-2013

New Mexico Higher Education Department  
Planning & Research Division

# Types of Dual Credit Data Collected


2

- SSN
- STARS ID
- Demographic
  - ▣ Name
  - ▣ Ethnicity
  - ▣ Gender
  - ▣ Birth date
- High School
- Postsecondary Institution
- Type of Courses Taken
- Credit Hours
- Grades
- Year of High School Graduation
- Methods of Course Delivery
- Course Location

Currently the four tribal institutions are not included but HED is pursuing agreements in future to capture this data.

# Dual Credit Enrollment Information

3

- Summer 2012
    - 1,623 Students \*
    - 2,399 Records \*\*
  - Fall 2012
    - 9,457 Students \*
    - 14,833 Records\*\*
  - Spring 2013
    - 10,200 Students \*
    - 15,484 Records\*\*
- 
- Academic Year 2012-2013
    - 14,151 Unique Students \*\*\*
    - 7,702 Female Students
    - 6,449 Male Students

\*The number of students represent distinct head count for a dual credit student for each semester.

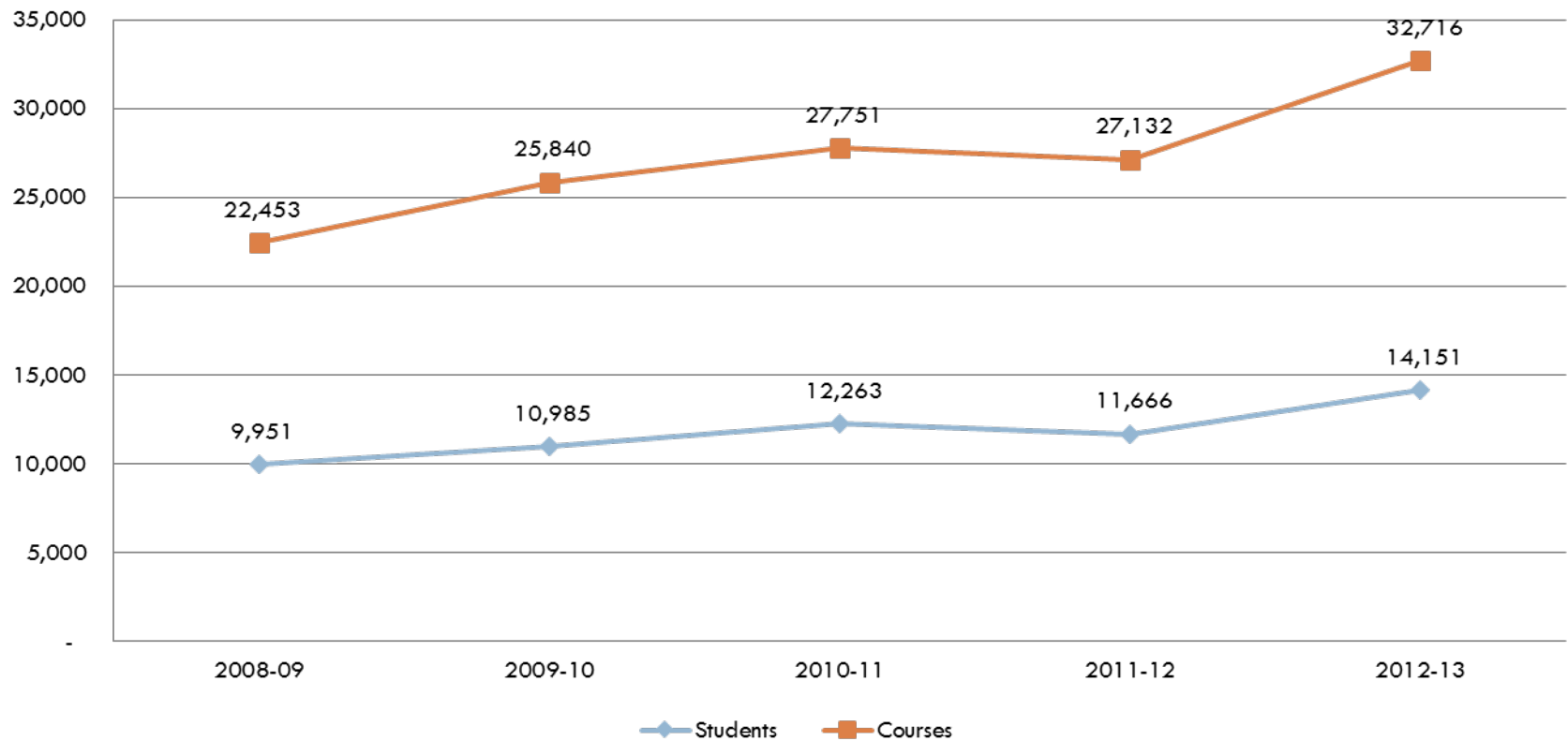
\*\*Records refer to number of courses each student can take in a given semester ( e.g one student can take three classes so there will be three records).

\*\*\* For AY12-13, unique students refer to distinct students that were taking DC courses in any semester and enrolled by census. DC students (an additional 897) that registered after census have not been included as no demographic information (ethnicity, gender) is available. There were (15,048) unique students in total for AY12-13

# NM Dual Credit Program Growth

4

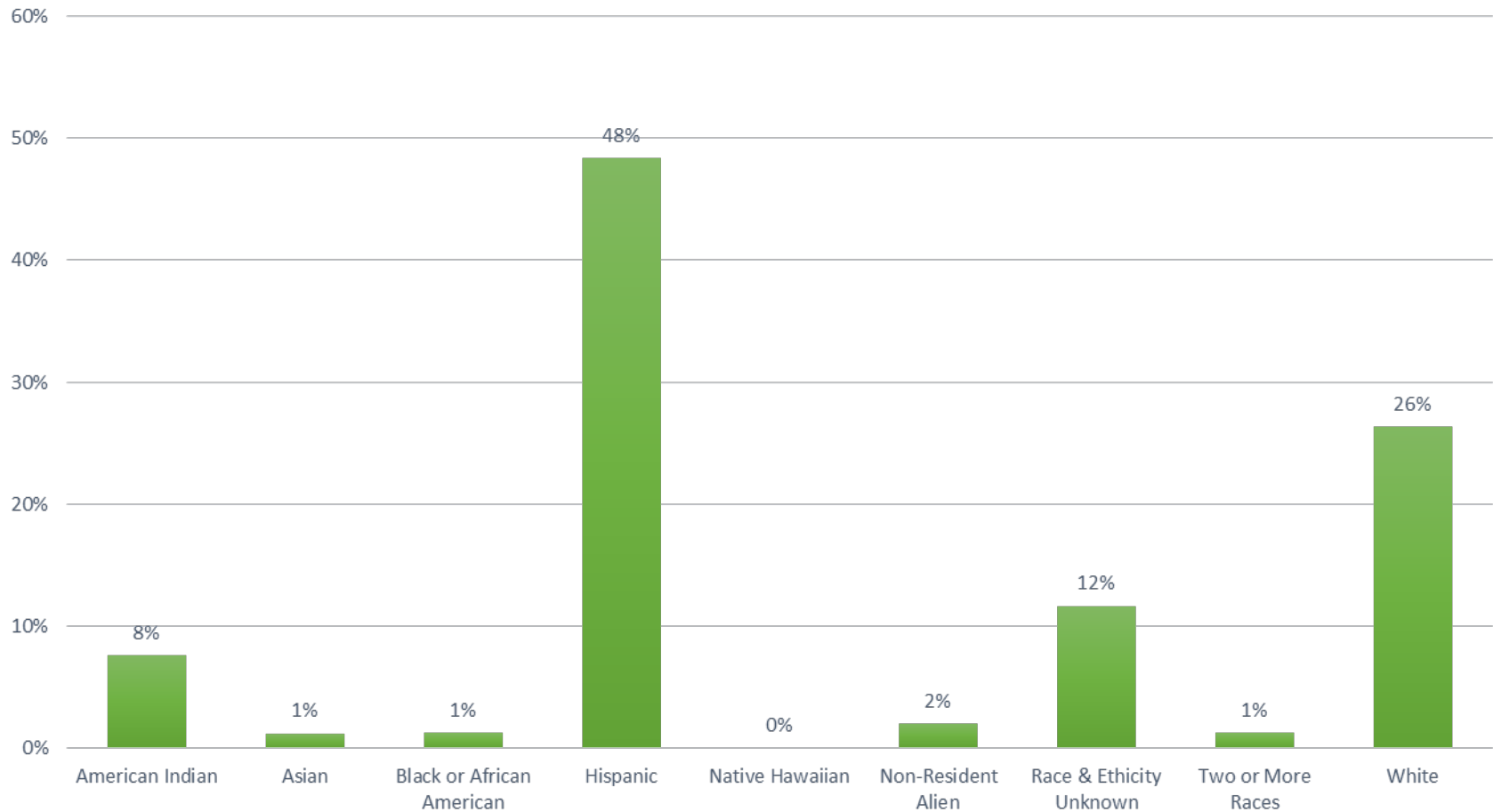
## NM Dual Credit Program Growth 2009-2013



# Dual Credit Enrollment By Ethnicity

## AY12-13

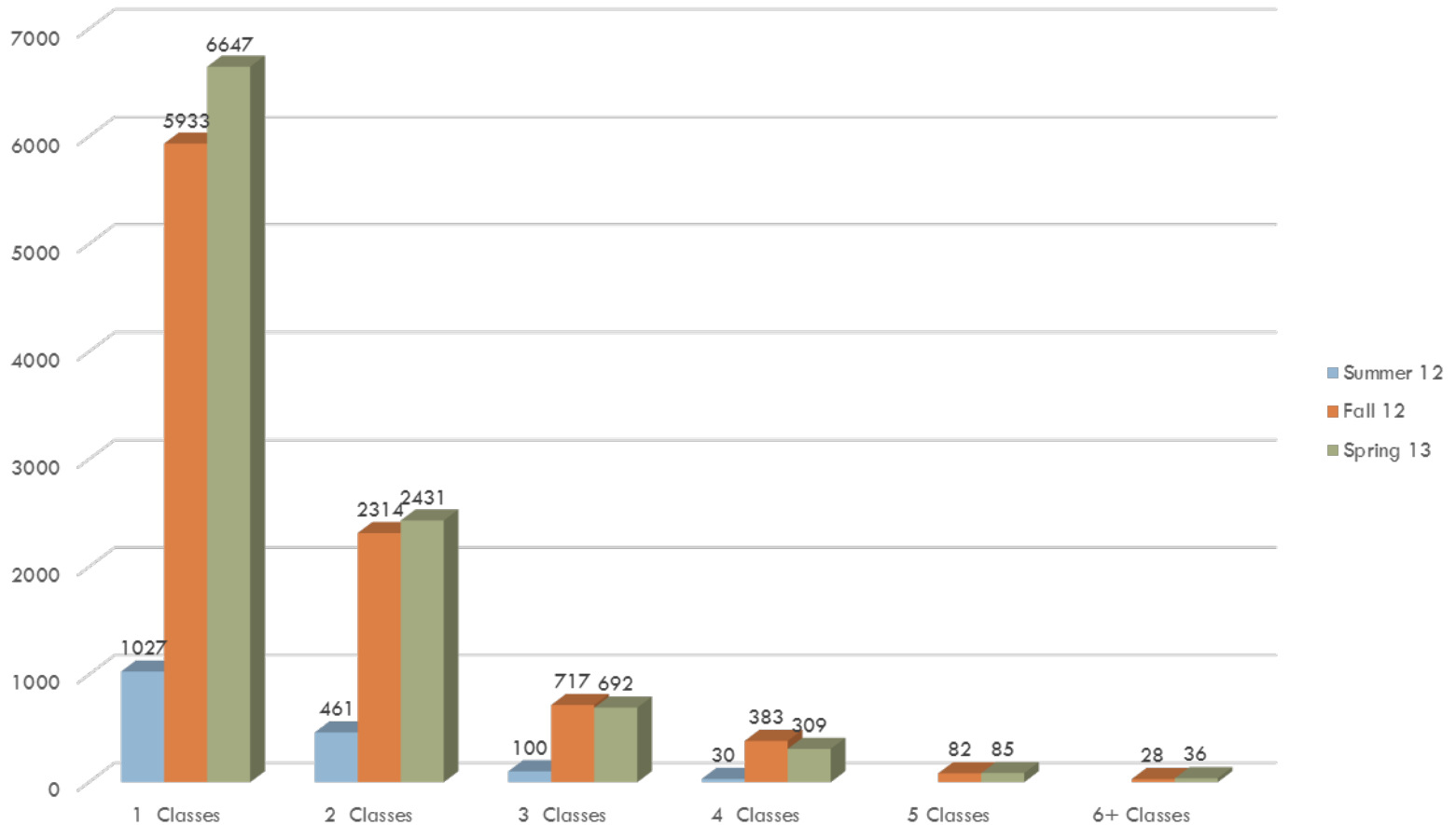
5



Non-resident generally refers to a student who is not a U.S. citizen or does not have a permanent resident status. Asian includes Native Hawaiian and Pacific Islander. Data is being reported under the new ethnicity guidelines. Distinct student count within each Academic Year (Summer 12, Fall 12 and Spring 13)

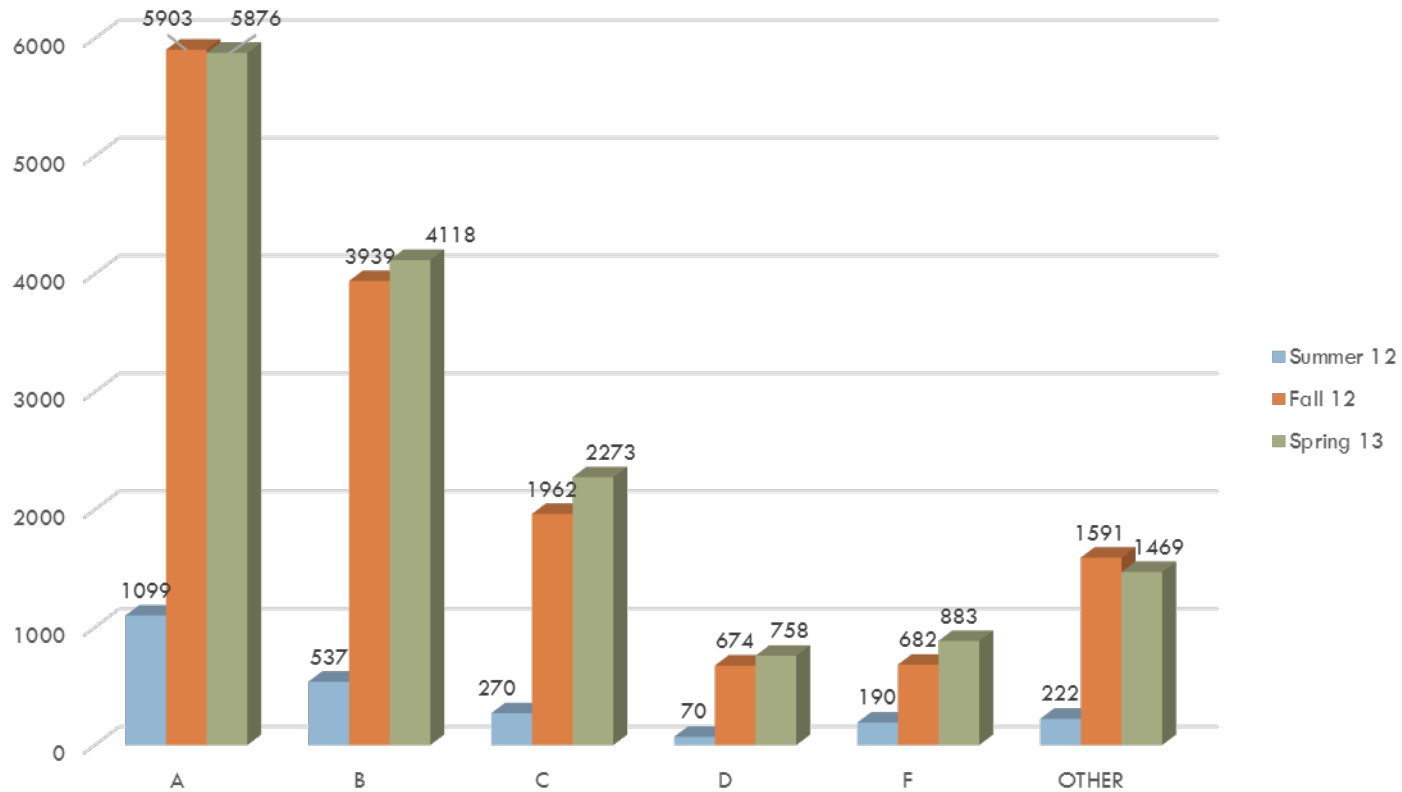
# Number of Classes Taken AY12-13

6



# Course Grade Distribution

7

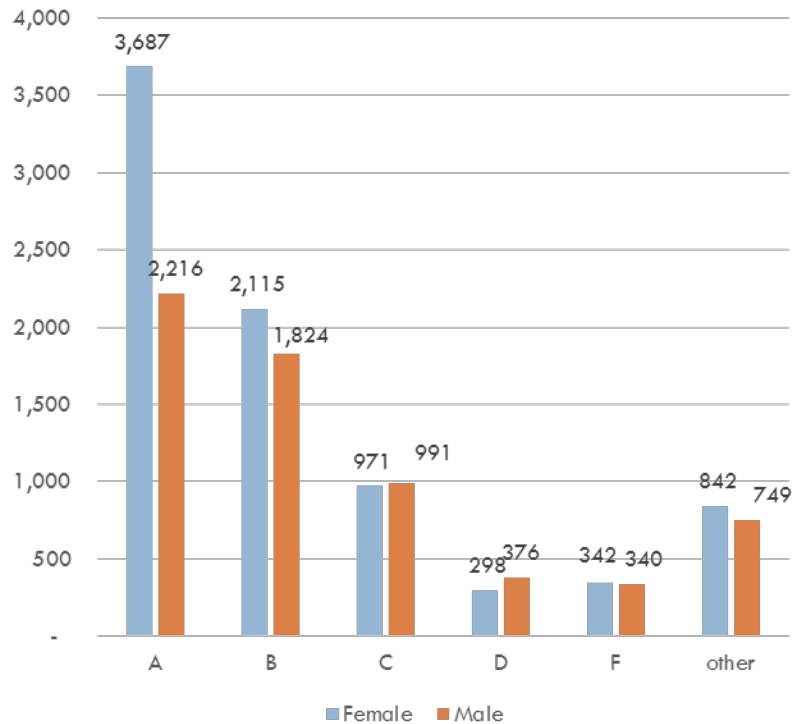


OTHER includes Pass / Fail, Credit / No Credit, Withdrawals, No Grade, Audit grades that do not count towards GPA calculation

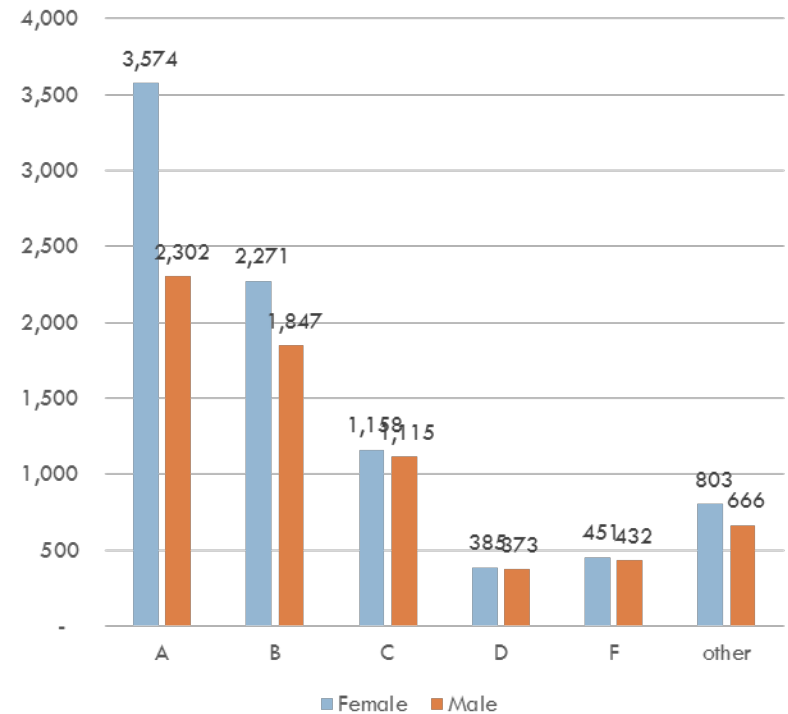
# Course Grade Distribution by Gender

8

## Fall 2012



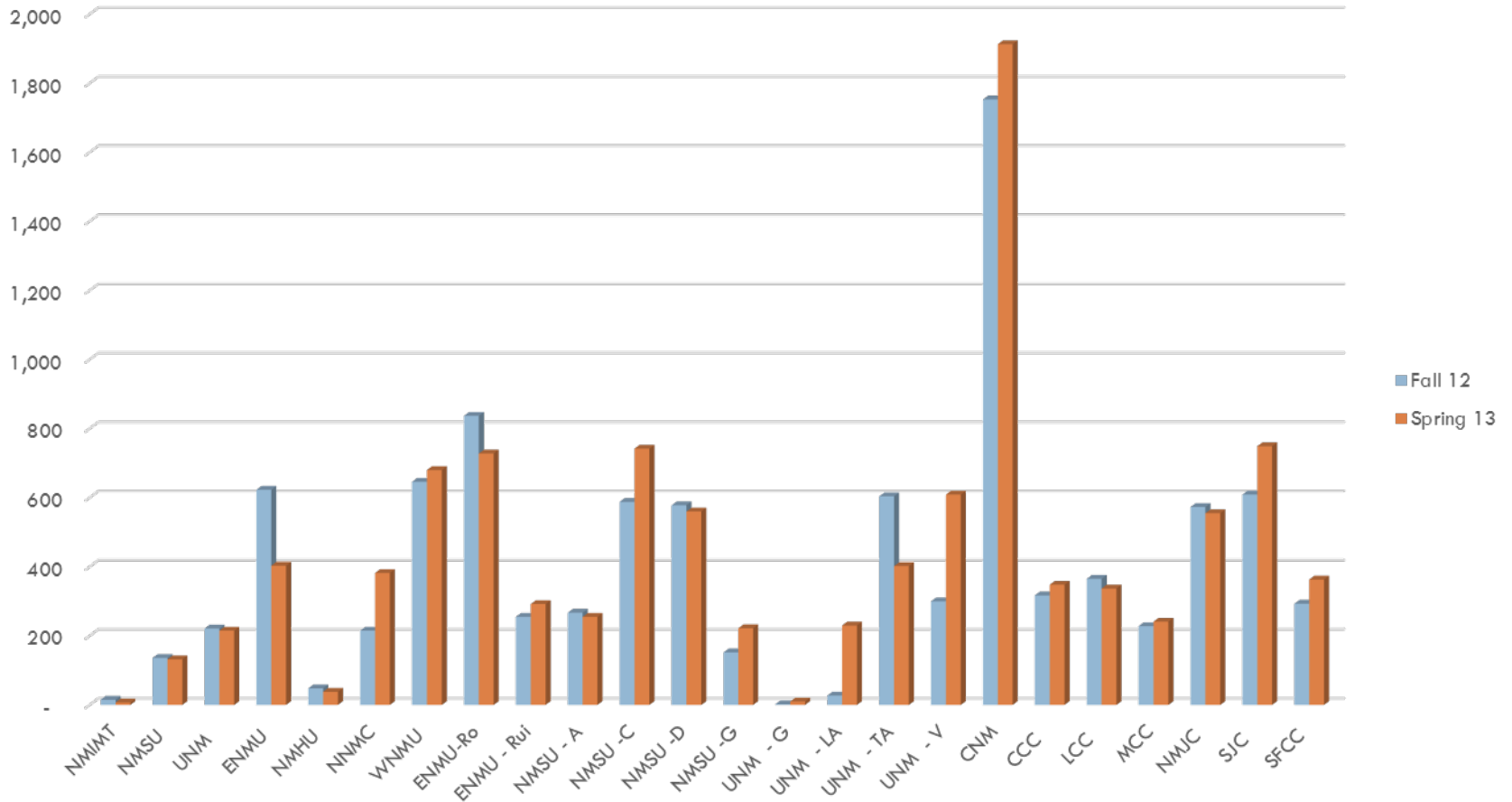
## Spring 2013



OTHER includes Pass / Fail, Credit / No Credit, Withdrawals, No Grade, etc.



# Dual Credit Enrollment at Postsecondary Institutions



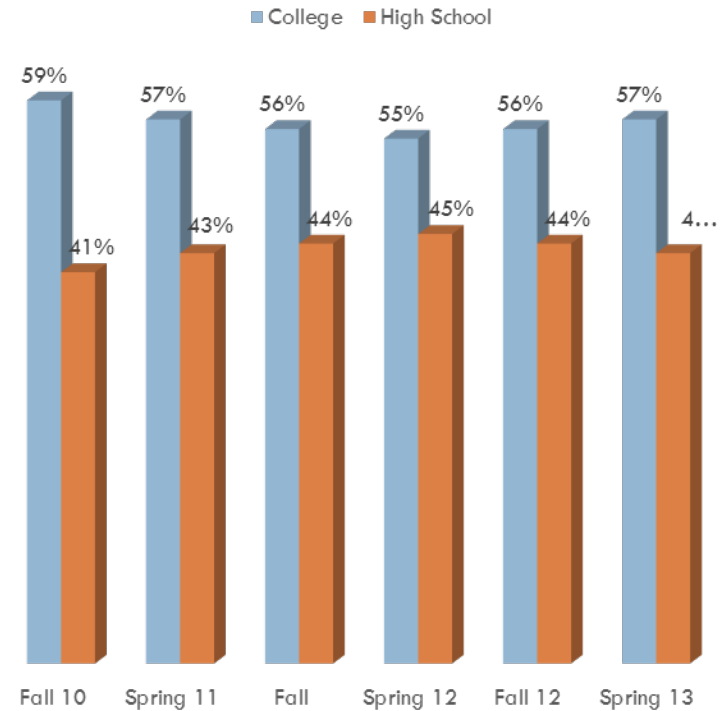
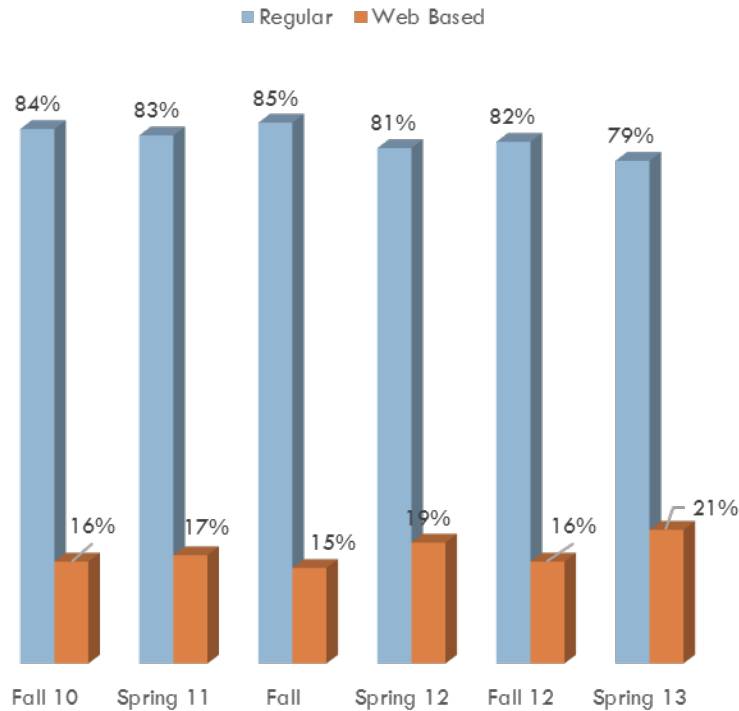
Complete list of institution abbreviation available on the last slide of this presentation. Data labels are not being provided at this time as some of them are less than 10. Summer 12 is also not provided. If needed, please email NMHED.

# Course Delivery and Course Location

10

## Online vs. Regular Instruction

## High School vs. College Campus



# Subject Area of Dual Credit Courses :

## Fall 2012

11

CIP refers to Classification of Instructional Program, a federal classification system of courses by subject area

CIP Codes	Title	Enrollment
1	Agriculture and related sciences	693
3	Natural resources and conservation	34
4	Architecture and related services	2
5	Area ethnic cultural and gender studies	27
9	Communication and journalism	234
10	Communications technologies	145
11	Computer and information sciences	639
12	Personal and culinary services	410
13	Education	326
14	Engineering	113
15	Engineering technologies / technicians	492
16	Foreign language, literatures, linguistics	687
19	Family and consumer / human science	153
22	Legal profession and studies	10
23	English language and literature / letters	888
24	Liberal arts, general studies, humanities	915
25	Library Sciences	0
26	Biological and biomedical science	414
27	Mathematics and statistics	964
28	Military Science	4
30	Multi / interdisciplinary studies	57

CIP Codes	Title	Enrollment
31	Park, recreation, leisure, and fitness	6
32	Basic skills	201
36	Leisure and recreational	94
37	Personal awareness and self improvement	746
38	Philosophy and religious studies	106
40	Physical science	607
41	Science technology / technicians	12
42	Psychology	435
43	Security and protective services	280
44	Public administration and social service professions	21
45	Social science	681
46	Construction trades	252
47	Mechanic and repair technologies / technicians	567
48	Precision production	504
49	Transportation and Materials	3
50	Visual and performing arts	893
51	Health profession and related clinical sciences	1168
52	Business, management, marketing, and related	684
54	History	366

# Subject Area of Dual Credit Courses : Spring 2013

12

CIP Codes	Title	Enrollment
1	Agriculture and related sciences	341
3	Natural resources and conservation	43
4	Architecture and related services	10
5	Area ethnic cultural and gender studies	94
9	Communication and journalism	241
10	Communications technologies	133
11	Computer and information sciences	828
12	Personal and culinary services	295
13	Education	437
14	Engineering	98
15	Engineering technologies / technicians	443
16	Foreign language, literatures, linguistics	604
19	Family and consumer / human science	160
22	Legal profession and studies	7
23	English language and literature / letters	1231
24	Liberal arts, general studies, humanities	655
26	Biological and biomedical science	517
27	Mathematics and statistics	904
28	Military Science	0
30	Multi / interdisciplinary studies	89
31	Park, recreation, leisure, and fitness	40

CIP Codes	Title	Enrollment
32	Basic skills	16
34	Health Related Knowledge	0
36	Leisure and recreational	8
37	Personal awareness and self improvement	766
38	Philosophy and religious studies	248
40	Physical science	582
41	Science Technology/Technicians	15
42	Psychology	688
43	Security and protective services	310
44	Public administration and social service professions	25
45	Social science	719
46	Construction trades	196
47	Mechanic and repair technologies / technicians	611
48	Precision production	414
49	Transportation and materials moving	1
50	Visual and performing arts	1046
51	Health profession and related clinical sciences	1336
52	Business, management, marketing, and related	897
54	History	435

# Institutional Abbreviation

Abbreviation		Institution and Campus Name	
Institution	Campus	Institution	Campus
CCC		Clovis Community College	Main
CNM		Central New Mexico Community College	Main
ENMU		Eastern New Mexico University	Main
ENMU	Ros	Eastern New Mexico University	Roswell Branch
ENMU	Rui	Eastern New Mexico University	Ruidoso Center
LCC		Luna Community College	Main
MCC		Mesa lands Community College	Main
NMHU		New Mexico Highlands University	Main
NMIMT		New Mexico Institute of Mining & Tech	Main
NMJC		New Mexico Junior College	Main
NMSU		New Mexico State University	Main
NMSU	A	New Mexico State University	Alamogordo Branch
NMSU	C	New Mexico State University	Carlsbad Branch
NMSU	G	New Mexico State University	Grants Branch
NMSU	DA	New Mexico State University	Dona Ana Branch
NNMC		Northern New Mexico College	Main
SFCC		Santa Fe Community College	Main
SJC		San Juan College	Main
UNM		University of New Mexico	Main
UNM	G	University of New Mexico	Gallup Branch
UNM	LA	University of New Mexico	Los Alamos Branch
UNM	V	University of New Mexico	Valencia Branch
UNM	T	University of New Mexico	Taos Branch
WNMU		Western New Mexico University	Main